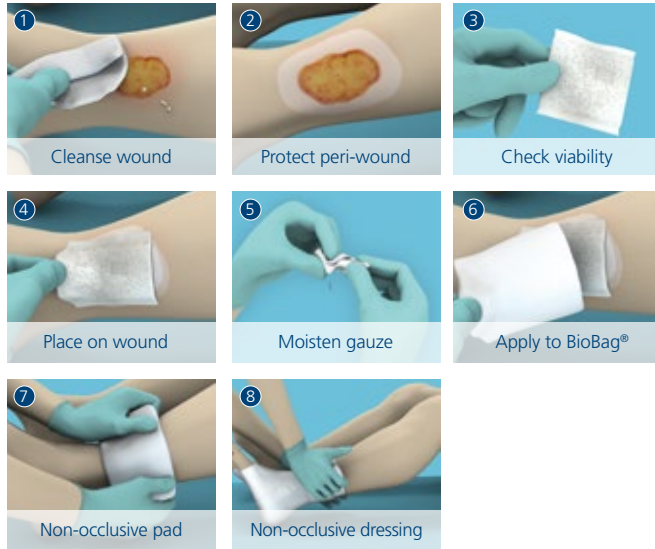


Looking after your Larval Therapy

Application



Day 3 assessment

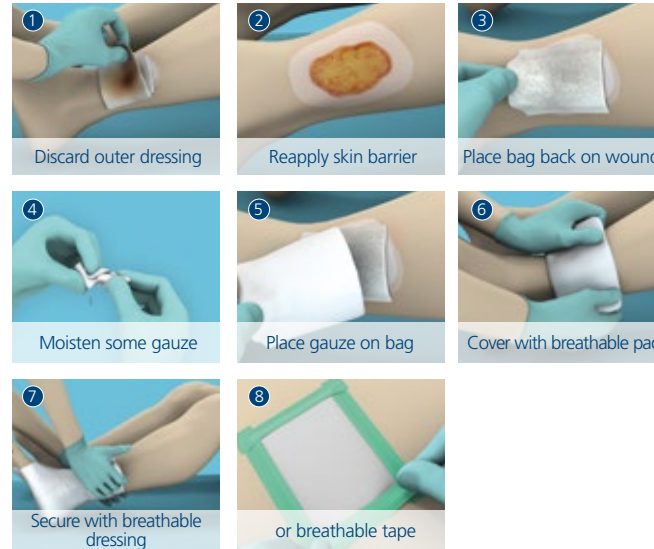


2-3 applications are usually required for complete debridement.

Non-progression of the wound indicates further debridement is required.

Wound progression & proliferation indicates completion of debridement.

Care



Disposal

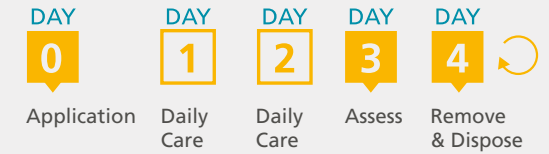


Double-bag and discard with dressings waste.

Prescribing

Larval Therapy is an unlicensed medicinal product. An unlicensed medicinal product should not be supplied where an equivalent licensed medicinal product can meet the special needs of the patient.

Treatment cycle



Storage

- Keep in transport containers until use
- **Do not freeze**
- Do not store above 25°C
- Apply before the expiry date
- For optimal results apply on the day of delivery

Viability

- Check viability before use
- Larvae should be a cream to beige colour
- Some movement should be visible
- Larvae might appear slow or sluggish
- Call us with viability concerns within 24 of receipt
- Take photos or video of viability concerns before applying or discarding